



Stainless Steel End-Suction Pump

Type FSSC

APPLICATIONS

- Industrial use
- Chemical solutions
- Industrial liquids
- Hot and cold water supply
- Swimming pool water
- Sea water
- Water supply and water treatment
- Food & beverages
- DI or demineralized water
- Other special pumping medium that used SCS14 or SCS13 materials

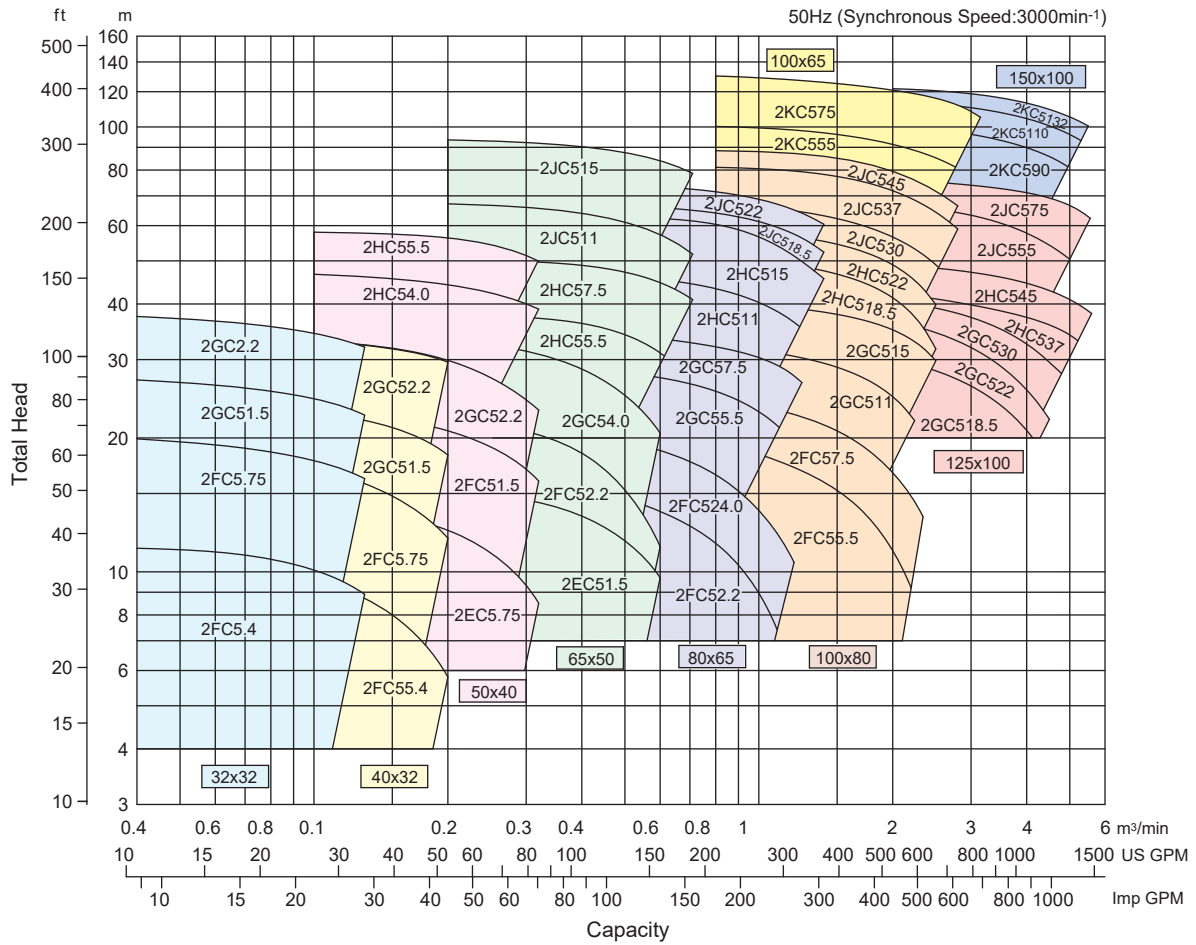
FEATURES

- Liquid contacting parts of pump are made of high grade SCS13 (SUS304) stainless steel.
- Easy maintenance BPO (Back Pull Out) feature allows rotating element to be removed without disconnecting the suction and discharge pipe work.
- Top centreline discharge, foot support under casing for maximum resistance to misalignment and distortion from pipe loads.
- Non-overload design to ensure stable performance for all applications.
- Compact construction, applicable for 2-Pole high speed motor provides a compact unit and minimizes installation area. Also available for 4-Pole pumping applications.
- Wide range application due to 304 stainless steel materials used. SCS14 (SUS316) also available as option.

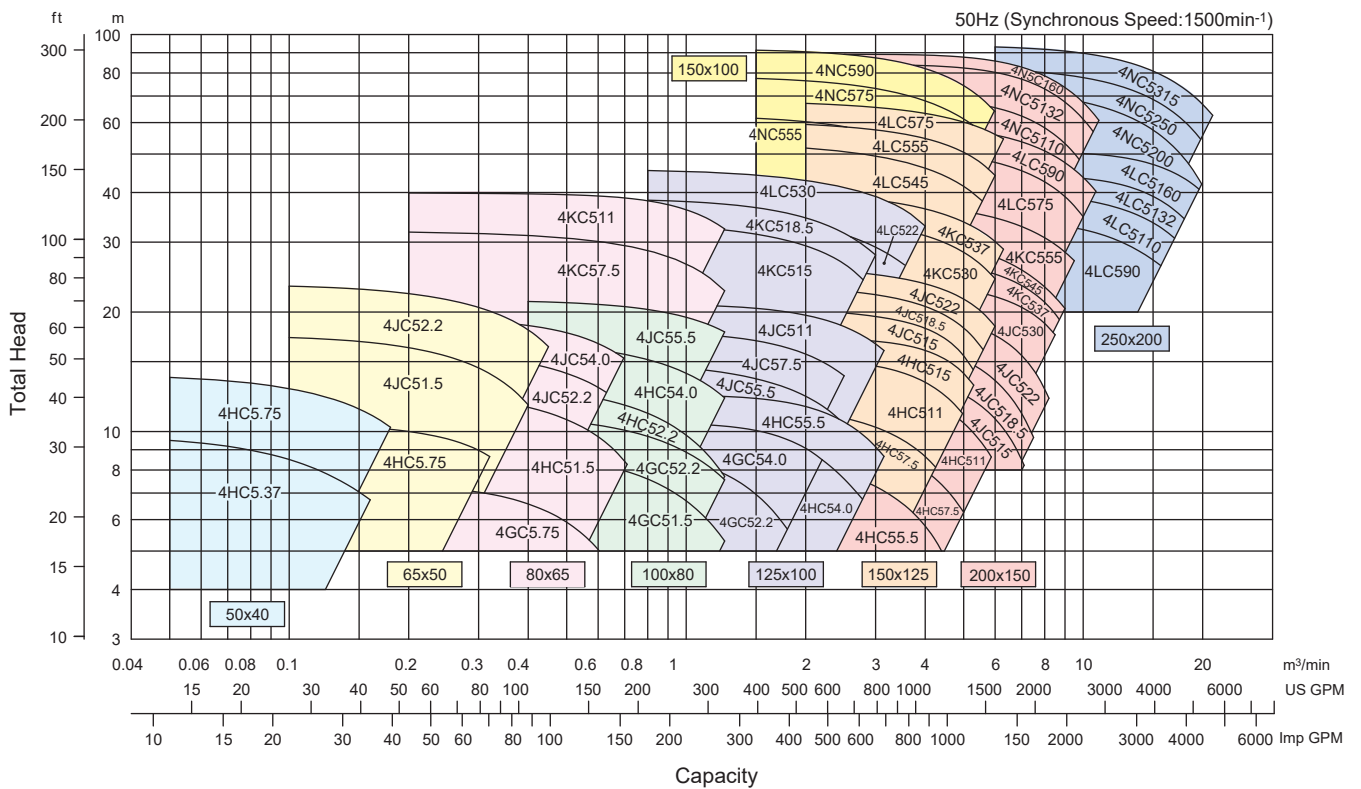


PERFORMANCE CHART

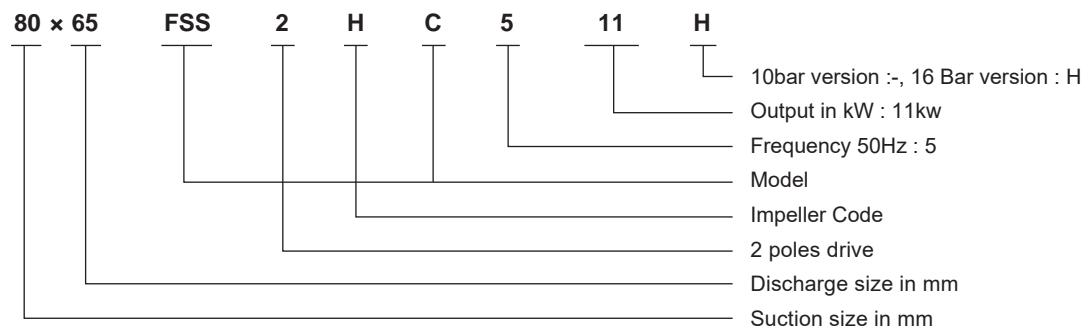
2 Poles



4 Poles



PRODUCT CODE/IDENTIFICATION

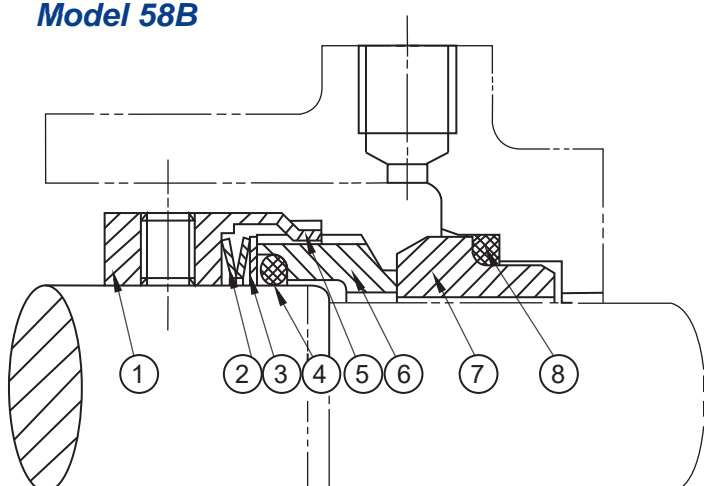


SPECIFICATIONS

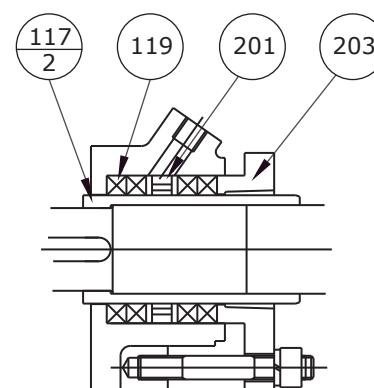
Description		Standard		Optional
Max. Working Pressure		10bar	16bar	
Liquid Handle	Name	Clean water	Clean water, Oil, Chemical liquid	
	Temperature	- 10°C to 105°C		-40°C to -10°C, 105°C to 105°C
Construction	Casing	Base install		
	Impeller	Enclosed		
	Shaft seal	Mechanical seal (Balanced)		Gland packing
	Sealing	Water series: Self flushing (-10°C to 80°C) External flushing (80°C to 105°C)		External flushing With quenching External flushing + Heat Exchanger
		Oil series: Self flushing (-10°C to 100°C) External flushing (100°C to 105°C)		
Bearing type and lubrication	Sealed deep groove ball bearings (Grease lubrication)		Open deep groove ball bearings (Oil lubrication)	
Flange		JIS 10K RF	JIS 16K RF	DIN 16bar / DIN 10bar
Materials	Casing	SCS13		SCS14
	Impeller	SCS13		SCS14
	Shaft	SUS316		
	Mechanical Seal	SiC/C/FPM		SiC/SiC/FPM Packing : PTFE/Flexible carbon

SECTIONAL VIEW OF MECHANICAL SEAL

Model 58B



Packing seal

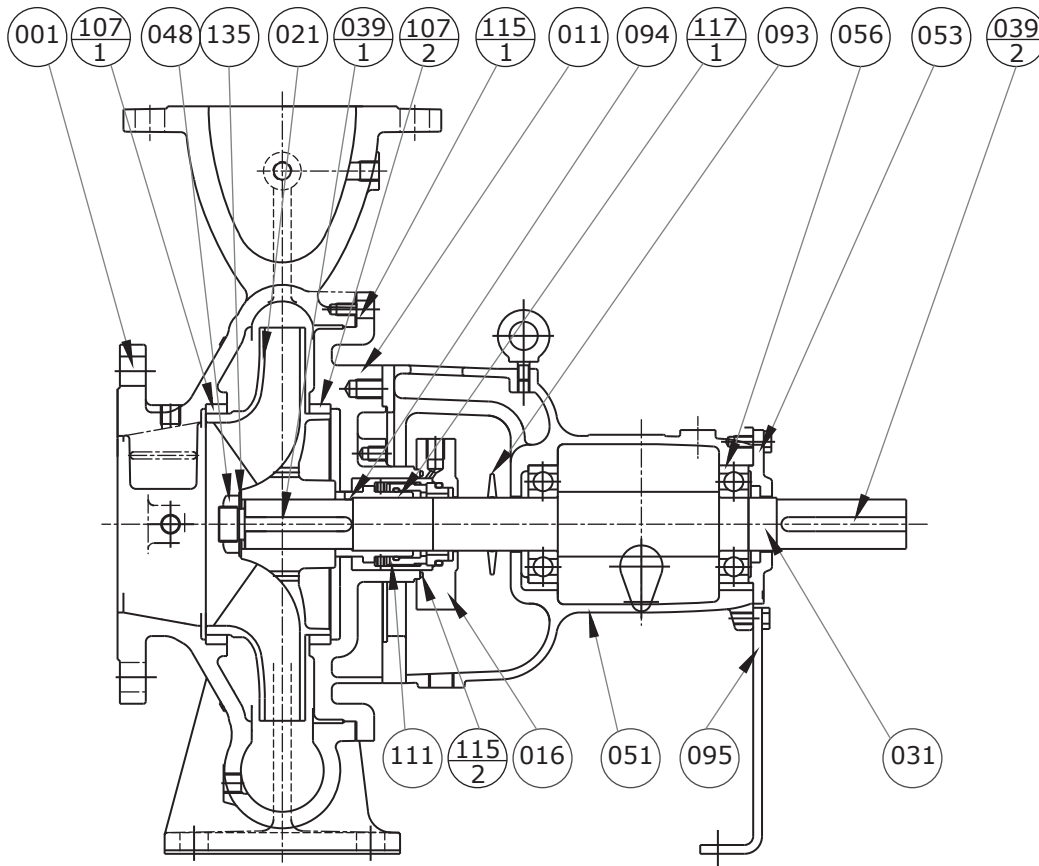


Part No.	Part Name	Material	Qty / Unit
1	Retainer	316 Stainless Steel	1
2	Spring	316 Stainless Steel	1
3	Thrust ring	316 Stainless Steel	1
4	Seat O-ring	FPM	1
5	Drive Ring	316 Stainless Steel	1
6	Balanced Face	Carbon	1
7	BP type seat	SiC	1
8	Seat O-ring	FPM	1

No.	Name of Part	Material	No. for 1 Set
203	Packing gland	Stainless steel	1
201	seal ring	Stainless steel	1
119	Packing		4
117-2	Shaft sleeve	Stainless steel	1

SECTIONAL VIEW

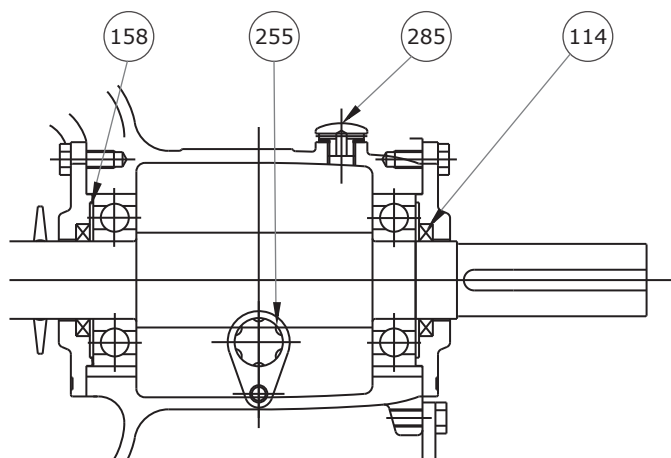
Grease Lubrication (Standard)



No.	Name of Part	Material	No. for 1 Set
001	Casing	Stainless steel	1
011	Casing cover	Stainless steel	1
016	Mechanical sealing gland	Stainless steel	1
021	Impeller	Stainless steel	1
031	Shaft	Stainless steel	1
048	Impeller nut	Stainless steel	1
051	Bearing housing	Cast iron	1
053	Bearing cover	Cast iron	1
056	Ball bearing	-	2
093	Deflector	CR	1
094	Shaft washer	PTFE	1





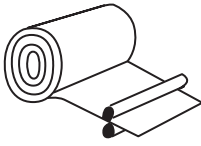




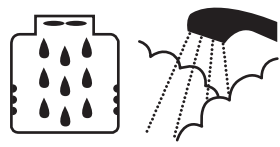
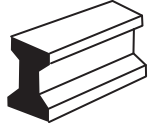



No.	Name of Part	Material	No. for 1 Set
095	Stay	Steel	1
111	Mechanical Seal	STD	1
135	Impeller Nut Washer	Stainless steel	1
039-1	Key	Stainless steel	1
039-2	Key	Steel	1
107-1	Case Wear Ring	Stainless steel	1
107-2	Case Wear Ring	Stainless steel	1
115-1	Sealing gasket	Non asbestos fiber	1
115-2	O-rings	FPM	1
117-1	Shaft sleeve	Stainless steel	1

Oil Lubrication (Optional)



No.	Name of Part	Material	No. for 1 Set
285	Air Breather		1
255	Oil Level Gauge		1
158	Wave Washer	T8	1
114	Oil seal		2

APPLICATIONS

<p>Chemical Industry</p>	<p>Water Treatment</p>
 <ul style="list-style-type: none"> • Neutralizing agents (milk of lime) • Chemical pumping 	 <ul style="list-style-type: none"> • De-mineralised water • De-ionised water • Booster pump • Pure water
<p>Oil Refining & Fuel Gas Processing</p>	<p>Motor car/Machinery Industries</p>
 <ul style="list-style-type: none"> • Waste disposal • Pit drains (water with soft mud) • Chemical 	 <ul style="list-style-type: none"> • Paint disposal (paint mixed water) • Wash water circulation (liquid mixed with chips, grindstone dust) • Water circulation
<p>Paper & Pulp</p>	<p>Water Works & Drainage</p>
 <ul style="list-style-type: none"> • Pulp treatment (max 4% concentration) • Additives (clay-mixed water) • Neutralizing liquid (milk of lime) 	 <ul style="list-style-type: none"> • Sludge transport (water with sludge concentration) • Settling tank drainage (water with sludge concentration)
<p>Food & Beverages</p>	<p>Pharmacy</p>
 <ul style="list-style-type: none"> • Pure water • Drinking water 	 <ul style="list-style-type: none"> • Chemical pumping • Pure water • Waste disposal
<p>Sugar/Salt Manufacturing</p>	<p>Hot Water Circulation & Cooling Tower</p>
 <ul style="list-style-type: none"> • Used wash water (earth and sand-mixed water) • Steamed and boiled liquid (molasses) 	 <ul style="list-style-type: none"> • Hot water • Clean water • Water circulation
<p>Steel Manufacturing & Refineries</p>	<p>Cement & General Industries</p>
 <ul style="list-style-type: none"> • Cooling water (mixed with coke dust) • Conveyor pit drainage (water mixed with iron oxide) • Residual settling tank liquid (water mixed with sludge) 	 <ul style="list-style-type: none"> • Milk of lime (lime-water mix) • General pumping
<p>Thermal Power Stations & Power Generation</p>	<p>Mineral/Mining</p>
 <ul style="list-style-type: none"> • Chemical • Dust disposal (dust-mixed water) 	 <ul style="list-style-type: none"> • Waste liquid (ore/mud-mixed water) • Pit drains (earth/sand-mixed water)

LIQUID HANDLED

Liquid	*St. steel		Gasket	Gland packing	Mechanical seal		Specific gravity	Density	Temperature
	JIS SCS13	JIS SCS14			Material	Water Activation Method			
*A									
Acetaldehyde	+	+	T	C	1	S			
Acetic acid	+	+	T	C	1	S	○	○	○
Acetic anhydride	+	+	T	C	1	S	○	○	○
Acetone	●	+	T	C	1	S			
Acetonitrile	●	+	F	D	1	S			
Acrylic acid	●	+	F	D	1	S	○	○	○
Acrylo nitrile	-	+	T	C	1	S			
Alcoholic drinks	●	+	F	C	1	S			
Allyl acetate	●	+	T	D	1	S			
Allyl acetone	●	+	T	C	1	S			
Allyl alcohol	●	+	F	C	1	S			
Allyl Chloride	●	+	F	C	1	S			
Ammonium carbonate	+	+	F	D	2	S+Q	○	○	○
Ammonium discarbonate	-	+	F	C	2	S+Q	○	○	○
Amyl acetate	-	+	T	C	1	S	○	○	○
Amyl alcohol	-	+	F	C	1	S	○	○	○
Amyl chloride	-	+	T	D	1	S			
Amyl ether	-	+	F	C	1	S			
Aqueous ammonia	-	+	F	C	2	S			
*B									
Barium chloride	-	●	F	C	2	S+Q	○	○	○
Benzaldehyde	●	+	T	C	1	S	○	○	○
Benzene	●	+	T	C	1	S			
Benzene	+	+	F	C	2	S			
Benzyl acetate	●	+	T	D	1	S	○	○	○
Bonc acid	+	+	F	C	2	S+Q	○	○	○
Brake oil	●	+	F	C	1	S			
Butyl acetate	+	+	T	D	1	S			
Butyl acetate diamyl	+	+	F	D	1	S	○	○	○
Butyl acetate dibtyl	+	+	T	D	1	S	○	○	○
Butyl acetate diethyl	+	+	F	D	1	S	○	○	○
Butyl alcohol	+	+	F	C	1	S			
Butyl ether	+	+	C	C	1	S			
Butyric acid	+	+	T	C	1	S	○	○	○
Butyric ethyl	+	+	T	D	1	S	○	○	○
Butyric methyl	+	+	T	D	1	S			
*C									
Calcium Carbonate	+	+	F	C	2	S+Q	○	○	○
Calcium hydroxide	+	+	F	C	2	S+Q	○	○	○
Carbolic acid	+	+	T	D	2	S+Q	○	○	○
Carbonate water	+	+	F	C	1	S			
Caustic soda	+	+	F	D	2	S+Q	○	○	○
Cellosolve	+	+	T	D	1	S			
Cellulose acetate	+	+	T	D	1	S	○	○	○
Chrolobenzene	+	+	T	C	1	S	○	○	○
Chrome alum	+	+	F	D	2	S+Q	○	○	○
Citric acid	+	+	F	C	2	S+Q	○	○	○
Coconut oil	●	+	F	C	1	S+Q			
Coffee extract	●	+	F	C	1	S			
Copper nitrate	+	+	F	D	2	S+Q	○	○	○
Corn oil	+	+	F	C	1	S			
Creosote	+	+	F	D	1	S	○	○	○
Cresol	+	+	F	D	1	S+Q	○	○	○
Cyclohexane	+	+	F	C	1	S			
*D									
Diacetone alcohol	+	+	T	C	1	S			
Dichlorobenzene	+	+	F	C	1	S	○	○	○
Dichloropentane	+	+	F	D	1	S	○	○	○
Diethyl benzene	+	+	F	C	1	S	○	○	○
Diethylene glycol	●	+	F	C	1	S	○	○	○
Dioxane	+	+	T	D	1	S	○	○	○
Drain	+	+	F	C	2	S			
Dyeing solution	●	+	F	D	2	S			
*E									
Emulsified oil	●	+	F	C	2	S			
Ethyl acetate	+	+	T	C	1	S	○	○	○
Ethyl acrylate	+	+	T	D	1	S			
Ethyl alcohol	+	+	F	C	1	S			
Ethyl benzene	+	+	F	C	1	S			
Ethylene chloride	●	●	F	D	2	S	○	○	○
Ethylene glycol	+	+	F	C	1	S	○	○	○
Ethyl pirydine	+	+	T	D	1	S			
*F									
Ferric nitrate	+	+	F	D	2	S+Q	○	○	○
Formaline	+	+	F	C	1	S	○	○	○
Fruit juice	+	+	F	C	1	S			
Fruit oil	+	+	F	C	1	S			
Fuel oil	+	+	F	C	1	S			
Furfural	+	+	T	C	1	S	○	○	○
*G									
Gas oil	+	+	F	C	1	S			
Gasoline	+	+	F	C	1	S			
Glycerine	+	+	F	C	1	S	○	○	○
*H									
Heavy oil	+	+	F	C	1	S			
Heptane	+	+	F	C	1	S			
Hexane	+	+	F	C	2	S			
Hexyl alcohol	+	+	F	C	1	S			
Hydraulic fluids	+	+	F	C	1	S			
*I									
Ink	+	+	T	D	1	S			
Isoamil alcohol	+	+	F	C	1	S			
Iso butil alcohol	+	+	F	C	1	S			
Iso butil-methyl ketone	+	+	F	D	1	S			
Iso octane	+	+	F	D	1	S			
Isopropyl alcohol	+	+	F	C	1	S	○	○	○
Isopropyl benzene	+	+	T	D	1	S			
*J									
Juice	+	+	F	C	1	S			
*K									
Kerosene	+	+	F	C	1	S			
*L									
Lactic acid	+	+	F	C	2	S	○	○	○
Linseed oil	+	+	F	C	1	S			
Lubricating oil	+	+	F	C	1	S			
*M									
Magnesium hydroxide	+	+	F	C	2	S+Q	○	○	○
Methyl acrylate	+	+	T	D	1	S			
Methyl alcohol	+	+	F	C	2	S			
Methyl chloride	+	+	F	D	2	S+Q			
Methyl chloroform	+	+	F	C	1	S	○	○	○
Methyl ethyl ketone	+	+	T	D	1	S			
Methyl isobutyl ketone	+	+	T	D	1	S			
Milk	+	+	F	C	1	S			
Mineral oil	+	+	F	C	1	S			
Mineral spirits	+	+	F	C	1	S			
Monoethylene glycol	+	+	F	C	1	S			
Mustard oil	+	+	F	C	1	S			
*N									
Naphtha	+	+	F	C	1	S			
Naphtha solvent	+	+	F	C	1	S			
Natrium carbonate	+	+	F	C	2	S+Q	○	○	○
Natrium discarbonate	+	+	F	C	2	S+Q	○	○	○
Nonyl phenol	+	+	F	D	1	S			
*O									
Octane			F	D	1	S			
Octanol			F	C	1	S			
Oleic acid			F	C	1	S	○	○	○
*P									
Paraffine wax			F	C	2	S			
Parilla oil			F	C	1	S			
Petroleum			F	C	1	S			
Petroleum benzine			F	C	1	S			
Pinene			F	D	1	S			
Potassium bromide			F	D	2	S+Q	○	○	○
Potassium carbonate			F	D	2	S+Q	○	○	○
Potassium chloride			F	C	2	S+Q	○	○	○
Potassium dischromate			F	C	2	S+Q	○	○	○
Potassium iodine			F	D	2	S+Q	○	○	○
Potassium nitrate			F	C	2	S+Q	○	○	○
Propyl acetate			T	D	1	S			
Propylene			F	C	1	S	○	○	○
*R									
Rapeseed oil			F	C	1	S			
Refrigeration oil			F	C	1	S			
*S									
Salad oil			F	C	1	S			
Sea water			F	C	1	S			
Soapsuds			F	C	2	S+Q			
Soda bromide			F	D	2	S+Q	○	○	○
Soda nitrate			F	C	2	S+Q	○	○	○
Soda sulfate			F	D	2	S+Q	○	○	○
Sodium silicate			F	C	2	S+Q			
Solar oil			F	D	1	S			
Sour oil			F	C	1	S			
Soya bean oil			F	C	1	S			
Soy saurce			F	C	1	S			
Stylene			F	D	1	S			
Sugar liquids			F	C	2	S			
Sunflower oil			F	C	1	S			
*T									
Tannic acid			F	D	2	S+Q	○	○	○
Thiophenol			F	D	1	S	○	○	○
Trichloroethylene			F	C	1	S	○	○	○
Triole			T	C	1	S			
Turpentine oil			F	C	1	S			
*U									
Urea			F	D	2	S+Q	○	○	○
*V									
Vegetable oil			F	C	1	S			
*W									
Whale oil			F	C	1	S			
Whisky			F	C	1	S			
Wine			F	C	1	S			
*X									
Xylene			F	C	1	S			

Casing/Impeller/Shaft : JIS SCS13/JIS SCS14

+: Resistant

●: Partially

-: Not resistant

Gasket material : F : Flour rubber

T : PTFE

Gland packing material : C : Carbonized fiber

D : Teflon

Mechanical seal material :

1 : Ceramic/carbon

2 : Superhard alloy/carbon

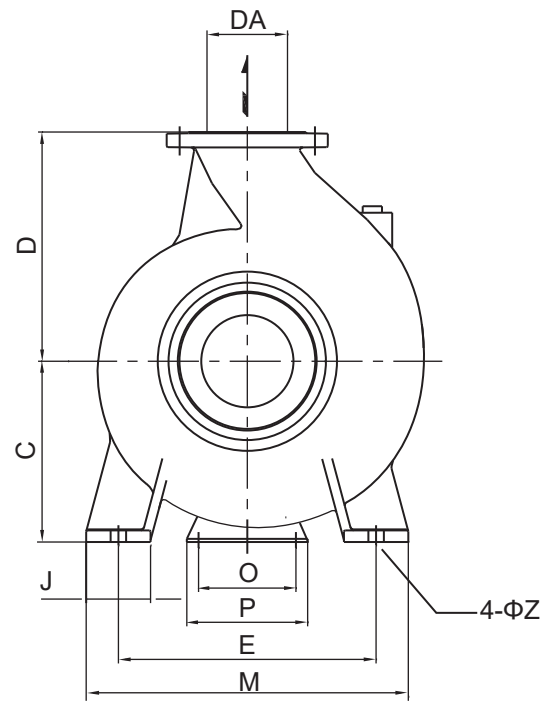
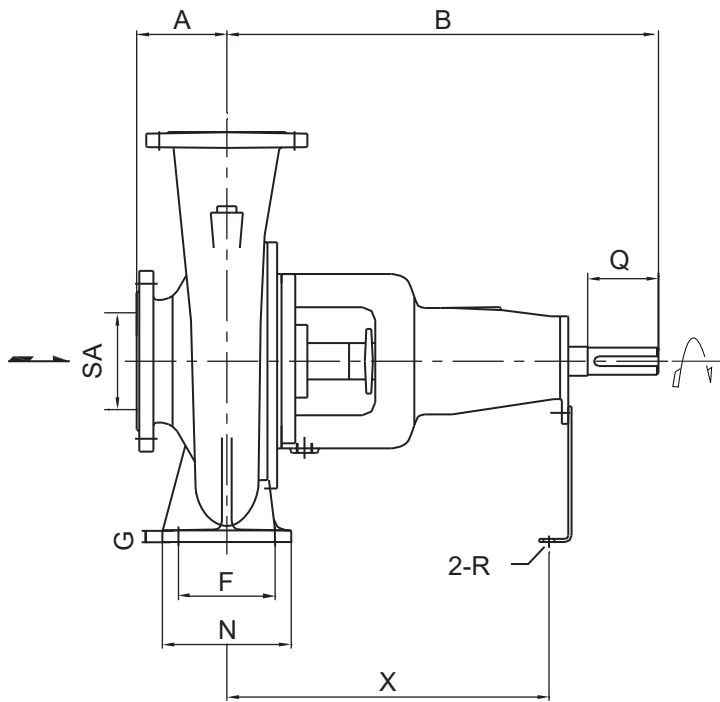
Water Activation (mechanical seal):

S : Self-injection

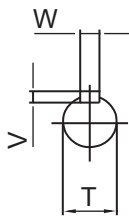
S+Q : Self-injection + Quenching or external injection

Specific gravity : ○ : Check the value

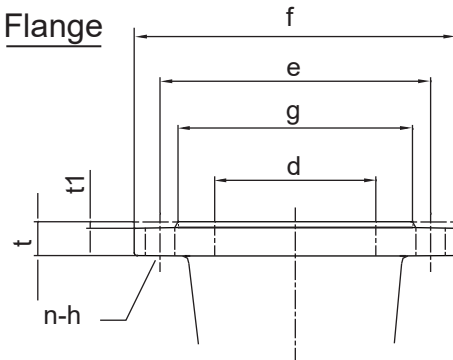
DIMENSION - BARE SHAFT PUMP



Shaft End



Flange



Suction/discharge flange dimensions (JIS 10K RF)

d mm	f mm	e mm	g mm	t1 mm	t mm	n	h mm
32	135	100	76	2	16	4	19
40	140	105	81	2	16	4	19
50	155	120	96	2	16	4	19
65	175	140	116	2	18	4	19
80	185	150	126	2	20	8	19
100	210	175	151	2	22	8	19
125	250	210	182	2	22	8	23
150	280	240	212	2	24	8	23
200	330	290	262	2	26	12	23
250	400	355	324	2	28	12	25

Suction/discharge flange dimensions (JIS 16K RF)

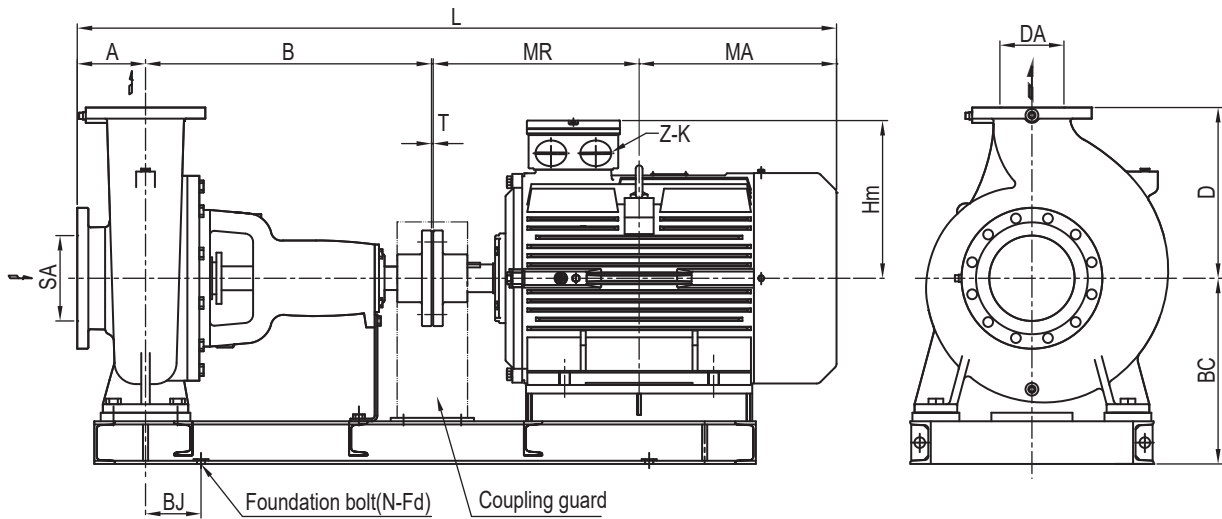
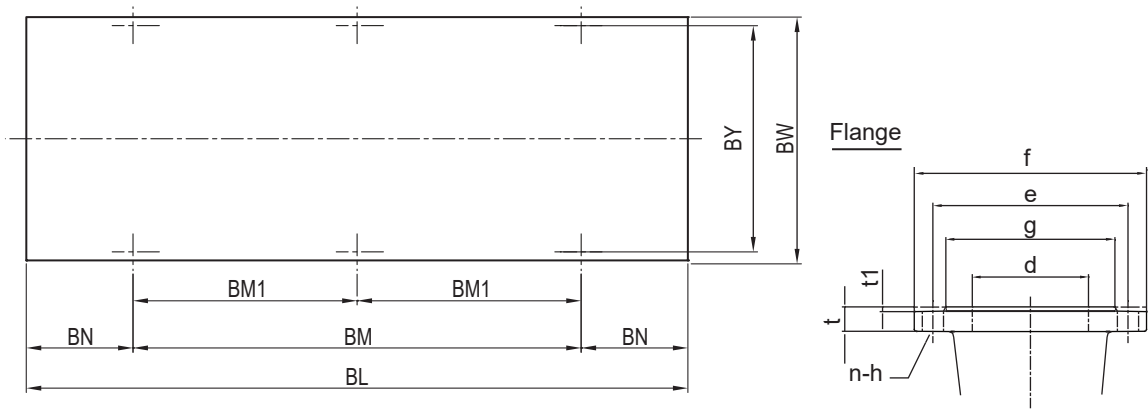
d mm	f mm	e mm	g mm	t1 mm	t mm	n	h mm
32	135	100	76	2	16	4	19
40	140	105	81	2	16	4	19
50	155	120	96	2	16	8	19
65	175	140	116	2	18	8	19
80	200	160	132	2	20	8	23
100	225	185	160	2	22	8	23
125	270	225	195	2	22	8	25
150	305	260	230	2	24	12	25
200	350	305	275	2	26	12	25
250	430	380	345	2	28	12	27

DIMENSION - BARE SHAFT PUMP

units:mm

Model	Size		Pump															Shaft			
	SA	DA	A	B	C	D	E	F	G	J	M	N	O	P	R	X	Z	T	Q	V	W
32X32FSSFC	32	32	65	280	112	140	140	70	8	50	190	100	80	120	17	205	15	19	40	6	6
32X32FSSGC	32	32	80	280	132	160	190	70	8	50	240	100	80	120	17	205	15	19	40	6	6
40X32FSSFC	40	32	65	280	112	140	140	70	8	50	190	100	80	120	17	205	15	19	40	6	6
40X32FSSGC	40	32	80	280	132	160	190	70	8	50	240	100	80	120	17	205	15	19	40	6	6
50X40FSSEC	50	40	80	280	112	140	140	70	8	50	190	100	80	120	17	205	15	19	40	6	6
50X40FSSFC	50	40	80	280	112	140	140	70	8	50	190	100	80	120	17	205	15	19	40	6	6
50X40FSSGC	50	40	80	280	132	160	190	70	8	50	240	100	80	120	17	205	15	19	40	6	6
50X40FSSHC	50	40	80	360	160	180	190	70	12	50	240	100	110	150	17	285	15	24	50	7	8
65X50FSSEC	65	50	80	280	112	140	140	70	8	50	190	100	80	120	17	205	15	19	40	6	6
65X50FSSFC	65	50	80	360	112	140	160	70	8	50	210	100	110	150	17	285	15	24	50	7	8
65X50FSSGC	65	50	80	360	132	160	190	70	10	50	240	100	110	150	17	285	15	24	50	7	8
65X50FSSHC	65	50	100	360	160	180	212	70	12	50	265	100	110	150	17	285	15	24	50	7	8
65X50FSSJC	65	50	100	360	180	225	250	95	14	65	320	125	110	150	17	285	15	24	50	7	8
80X65FSSFC	80	65	100	360	132	160	190	70	10	50	240	100	110	150	17	285	15	24	50	7	8
80X65FSSGC	80	65	100	360	160	180	212	70	12	50	265	100	110	150	17	285	15	24	50	7	8
80X65FSSHC	80	65	100	360	160	200	212	70	12	50	265	100	110	150	17	285	15	24	50	7	8
80X65FSSJC	80	65	100	360	180	225	250	95	14	65	320	125	110	150	17	285	15	32	80	8	10
80X65FSSKC	80	65	125	470	225	280	315	120	16	80	400	160	110	150	17	370	20	32	80	8	10
100X65FSSKC	100	65	125	360	225	280	315	120	16	80	400	160	110	150	17	285	20	38	80	8	10
100X80FSSFC	100	80	100	360	160	180	212	95	10	65	280	125	110	150	17	285	15	24	50	7	8
100X80FSSGC	100	80	100	360	160	200	212	95	14	65	280	125	110	150	17	285	15	24	50	7	8
100X80FSSHC	100	80	100	360	180	225	250	95	15	65	320	125	110	150	17	285	15	32	80	8	10
100X80FSSJC	100	80	100	360	200	250	280	120	15	80	360	160	110	150	17	285	19	32	80	8	10
125X100FSSGC	125	100	125	360	180	250	250	95	16	65	320	125	110	150	17	285	15	32	80	8	10
125X100FSSHC	125	100	125	360	225	280	315	120	14	80	400	160	110	150	17	281	19	32	80	8	10
125X100FSSJC	125	100	140	470	225	280	315	120	16	80	400	160	110	150	17	370	19	38	80	8	10
125X100FSSKC	125	100	140	470	250	315	315	120	16	80	400	160	110	150	17	370	19	32	80	8	10
125X100FSSLC	125	100	140	530	280	355	400	150	20	100	500	200	110	150	17	370	24	42	110	8	12
150X100FSSKC	150	100	140	530	250	315	315	120	16	80	400	160	90	120	15	373	19	42	95	8	12
150X100FSSNC	150	100	180	670	375	450	450	150	20	100	550	200	140	180	19	500	24	48	110	9	14
150X125FSSHC	150	125	140	470	250	315	315	120	16	80	400	160	110	150	17	370	19	32	80	8	10
150X125FSSJC	150	125	140	470	250	355	315	120	16	80	400	160	110	150	17	370	19	32	80	8	10
150X125FSSKC	150	125	140	530	280	355	400	150	18	100	500	200	110	150	17	370	24	42	110	8	12
150X125FSSLC	150	125	140	530	315	400	400	150	20	100	500	200	110	150	17	370	24	42	110	8	12
200X150FSSHC	200	150	160	470	280	355	400	150	18	100	500	200	110	150	17	370	24	32	80	8	10
200X150FSSJC	200	150	160	530	280	375	400	150	18	100	500	200	110	150	17	370	24	42	110	8	12
200X150FSSKC	200	150	160	670	315	400	450	150	18	100	550	200	140	180	19	500	24	48	110	9	14
200X150FSSLC	200	150	164	670	325	450	450	150	20	100	550	200	140	180	19	500	24	48	110	9	14
200X150FSSNC	200	150	184	670	375	560	450	150	20	100	550	200	140	180	19	500	24	60	110	11	18
250X200FSSLC	250	200	180	670	385	560	560	250	25	100	660	315	140	180	19	500	24	60	110	11	18
250X200FSSNC	250	200	200	820	435	630	560	250	25	100	660	315	160	200	19	630	27	74	125	12	20

DIMENSION - PUMP WITH MOTOR



Suction/discharge flange dimensions (JIS 10K RF)

d mm	f mm	e mm	g mm	t1 mm	t mm	n	h mm
32	135	100	76	2	16	4	19
40	140	105	81	2	16	4	19
50	155	120	96	2	16	4	19
65	175	140	116	2	18	4	19
80	185	150	126	2	20	8	19
100	210	175	151	2	22	8	19
125	250	210	182	2	22	8	23
150	280	240	212	2	24	8	23
200	330	290	262	2	26	12	23
250	400	355	324	2	28	12	25

Suction/discharge flange dimensions (JIS 16K RF)

d mm	f mm	e mm	g mm	t1 mm	t mm	n	h mm
32	135	100	76	2	16	4	19
40	140	105	81	2	16	4	19
50	155	120	96	2	16	8	19
65	175	140	116	2	18	8	19
80	200	160	132	2	20	8	23
100	225	185	160	2	22	8	23
125	270	225	195	2	22	8	25
150	305	260	230	2	24	12	25
200	350	305	275	2	26	12	25
250	430	380	345	2	28	12	27

DIMENSION - PUMP WITH MOTOR (2P MOTOR)

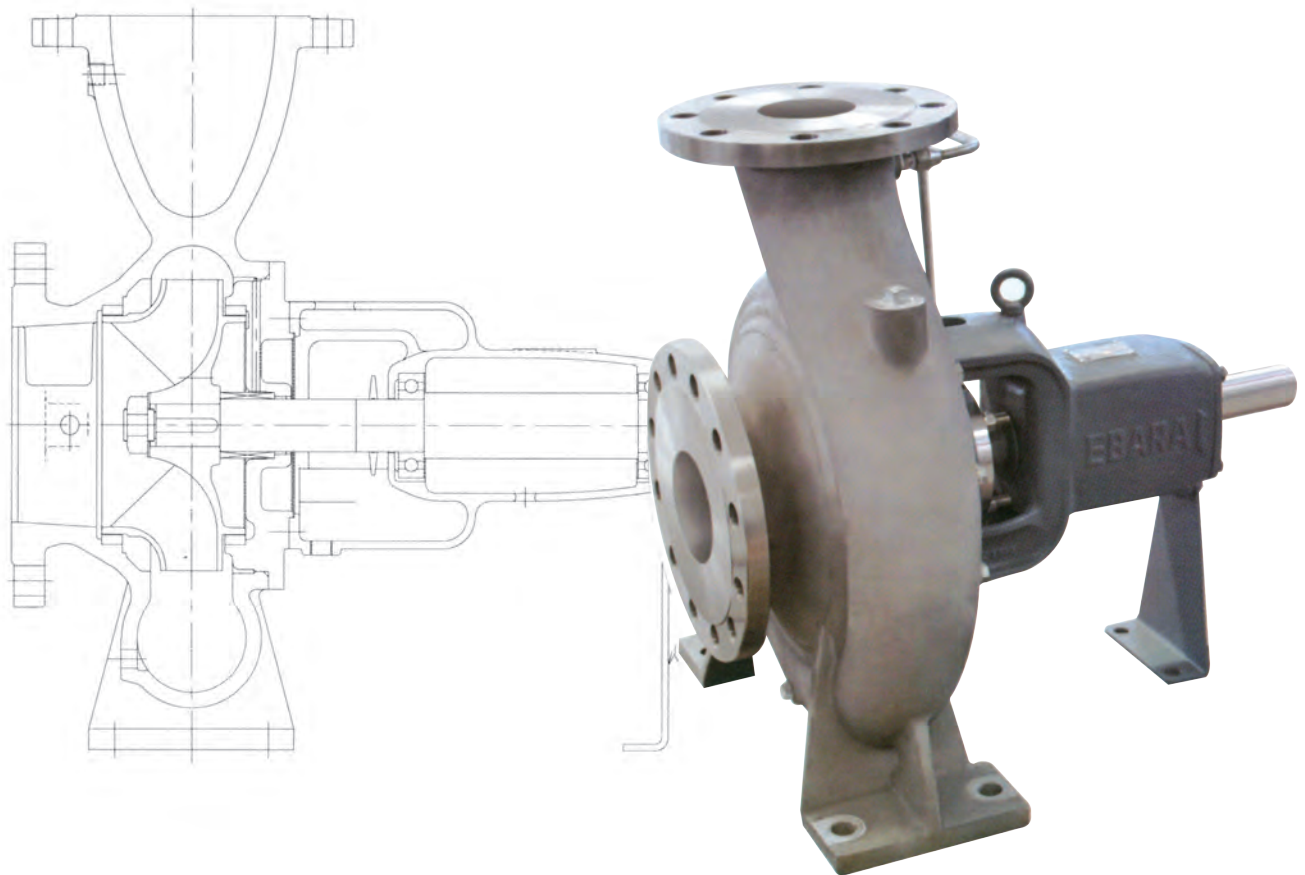
Model	Output	Size		Pump				Motor					Common Base										Total size			
	kW	SA	DA	A	B	D	Wt kg	Frame	MR	MA	Hm	Z-K	Wt kg	BC	BJ	BL	BM	BM1	BN	BY	BW	N-Fd	Wt kg	t	L	Wt kg
32X32FSS2FC	0.37	32	32	65	280	140	17	71M	120	120	137	M25X1.5+M16X1.5	11	192	35	550	350	-	100	220	250	4-Φ15	20	3	588	50
32X32FSS2GC	0.75	32	32	65	280	140	17	80M	140	148	142	M25X1.5+M16X1.5	15.5	192	35	570	370	-	100	220	250	4-Φ15	20	3	636	55
32X32FSS2GC	1.5	32	32	80	280	160	17	90S	156	160	152	M25X1.5+M16X1.5	20	212	55	615	375	-	120	235	270	4-Φ15	23	3	679	63
32X32FSS2GC	2.2	32	32	80	280	160	17	90L	168.5	172.5	152	M25X1.5+M16X1.5	23	212	55	615	375	-	120	235	270	4-Φ15	23	3	704	66
40X32FSS2FC	0.37	40	32	65	280	140	19	71M	120	120	137	M25X1.5+M16X1.5	11	192	35	550	350	-	100	220	250	4-Φ15	20	3	598	53
40X32FSS2FC	0.75	40	32	65	280	140	19	80M	140	148	142	M25X1.5+M16X1.5	15.5	192	35	570	370	-	100	220	250	4-Φ15	20	3	636	57
40X32FSS2GC	1.5	40	32	80	280	160	23	90S	156	160	152	M25X1.5+M16X1.5	20	212	55	615	375	-	120	235	270	4-Φ15	23	3	679	69
40X32FSS2GC	2.2	40	32	80	280	160	23	90L	168.5	172.5	152	M25X1.5+M16X1.5	23	212	55	615	375	-	120	235	270	4-Φ15	23	3	704	72
50X40FSS2EC	0.75	50	40	80	280	140	20	80M	140	148	142	M25X1.5+M16X1.5	15.5	192	35	570	370	-	100	220	250	4-Φ15	20	3	651	58
50X40FSS2FC	1.5	50	40	80	280	140	20	90S	156	160	152	M25X1.5+M16X1.5	20	192	35	590	390	-	100	235	270	4-Φ15	23	3	679	66
50X40FSS2GC	2.2	50	40	80	280	160	24	90L	168.5	172.5	152	M25X1.5+M16X1.5	23	212	55	615	375	-	120	235	270	4-Φ15	23	3	704	74
50X40FSS2HC	4	50	40	80	360	180	30	112M	200	193.5	189	2-M32X1.5	40	240	55	740	500	-	120	280	310	4-Φ15	28	3	837	103
50X40FSS2HC	5.5	50	40	80	360	180	30	132S	239	241	192	2-M32X1.5	56	240	52.5	835	575	-	130	290	320	4-Φ15	40	3	923	132
65X50FSS2EC	1.5	65	50	80	280	140	23	90S	156	160	152	M25X1.5+M16X1.5	20	192	35	590	390	-	100	235	270	4-Φ15	23	3	679	69
65X50FSS2FC	2.2	65	50	80	360	140	24	90L	168.5	172.5	152	M25X1.5+M16X1.5	23	192	55	695	455	-	120	220	250	4-Φ15	22	3	784	72
65X50FSS2GC	4	65	50	80	360	160	27	112M	200	193.5	189	2-M32X1.5	40	212	55	735	495	-	120	250	280	4-Φ15	27	3	837	99
65X50FSS2HC	4	65	50	100	360	180	33	112M	200	193.5	189	2-M32X1.5	40	240	55	740	500	-	120	280	310	4-Φ15	28	3	857	106
65X50FSS2HC	5.5	65	50	100	360	180	33	132S	239	241	192	2-M32X1.5	56	240	52.5	835	575	-	130	290	320	4-Φ15	40	3	943	135
65X50FSS2HC	7.5	65	50	100	360	180	33	132S	239	241	192	2-M32X1.5	62	240	52.5	835	575	-	130	290	320	4-Φ15	40	3	943	142
65X50FSS2JC	11	65	50	100	360	225	40	160M	323	291	255	2-M40X1.5	96	280	82.5	970	650	-	160	350	380	4-Φ15	55	3	1077	201
65X50FSS2JC	15	65	50	100	360	225	40	160M	323	291	255	2-M40X1.5	106	280	82.5	970	650	-	160	350	380	4-Φ15	55	3	1077	211
80X65FSS2FC	2.2	80	65	100	360	160	28	90L	168.5	172.5	152	M25X1.5+M16X1.5	23	212	55	700	460	-	120	250	280	4-Φ15	24	3	804	79
80X65FSS2FC	4	80	65	100	360	160	28	112M	200	193.5	189	2-M32X1.5	40	212	55	735	495	-	120	250	280	4-Φ15	27	3	857	100
80X65FSS2GC	5.5	80	65	100	360	180	32	132S	239	241	192	2-M32X1.5	56	240	52.5	835	575	-	130	290	320	4-Φ15	40	3	943	134
80X65FSS2GC	7.5	80	65	100	360	180	32	132S	239	241	192	2-M32X1.5	62	240	52.5	835	575	-	130	290	320	4-Φ15	40	3	943	141
80X65FSS2HC	11	80	65	100	360	200	37	160M	323	291	255	2-M40X1.5	96	260	72.5	920	620	-	150	350	380	4-Φ15	43	3	1077	184
80X65FSS2HC	15	80	65	100	360	200	37	160M	323	291	255	2-M40X1.5	106	260	72.5	920	620	-	150	350	380	4-Φ15	43	3	1077	195
80X65FSS2JC	18.5	80	65	100	360	225	60	160L	345	329	255	2-M40X1.5	125	280	82.5	970	650	-	160	350	380	4-Φ15	55	3	1137	252
80X65FSS2JC	22	80	65	100	360	225	60	180M	351.5	331.5	270	2-M40X1.5	152	280	82.5	980	660	-	160	390	420	4-Φ15	49	3	1146	274
100X65FSS2KC	55	100	65	125	360	280	106	250M	483.5	433.5	373	2-M63X1.5	378	375	105	1220	820	-	200	515	560	4-Φ19	100	4	1406	613
100X65FSS2KC	75	100	65	125	360	280	106	280S	514	462	413	2-M63X1.5	550	405	110	1270	850	-	210	590	630	4-Φ19	102	4	1465	796
100X80FSS2FC	5.5	100	80	100	360	180	33	132S	239	241	192	2-M32X1.5	56	240	52.5	835	575	-	130	290	320	4-Φ15	40	3	943	135
100X80FSS2FC	7.5	100	80	100	360	180	33	132S	239	241	192	2-M32X1.5	62	240	52.5	835	575	-	130	290	320	4-Φ15	40	3	943	142
100X80FSS2GC	7.5	100	80	100	360	200	38	132S	239	241	192	2-M32X1.5	62	240	52.5	835	575	-	130	290	320	4-Φ15	40	3	943	147
100X80FSS2GC	11	100	80	100	360	200	38	160M	323	291	255	2-M40X1.5	96	260	72.5	920	620	-	150	350	380	4-Φ15	43	3	1077	185
100X80FSS2GC	15	100	80	100	360	200	38	160M	323	291	255	2-M40X1.5	106	260	72.5	920	620	-	150	350	380	4-Φ15	43	3	1077	196
100X80FSS2HC	18.5	100	80	100	360	225	62	160L	345	329	255	2-M40X1.5	125	280	82.5	970	650	-	160	350	380	4-Φ15	55	3	1137	254
100X80FSS2HC	22	100	80	100	360	225	62	180M	351.5	331.5	270	2-M40X1.5	152	280	82.5	980	660	-	160	390	420	4-Φ15	49	3	1146	276
100X80FSS2JC	30	100	80	100	360	250	70	200L	395.5	376.5	300	2-M50X1.5	229	300	85	1070	710	-	180	420	450	4-Φ15	57	4	1236	374
100X80FSS2JC	37	100	80	100	360	250	70	200L	395.5	376.5	300	2-M50X1.5	245	300	85	1070	710	-	180	420	450	4-Φ15	57	4	1236	391
100X80FSS2JC	45	100	80	100	360	250	70	225M	414.5	400.5	327	2-M50X1.5	307	330	85	1110	750	-	180	460	490	4-Φ15	74	4	1279	474
125X100FSS2GC	18.5	125	100	125	360	250	60	160L	345	329	255	2-M40X1.5	125	280	82.5	970	650	-	160	350	380	4-Φ15	55	3	1162	252
125X100FSS2GC	22	125	100	125	360	250	60	180M	351.5	331.5	270	2-M40X1.5	152	280	82.5	980	660	-	160	390	420	4-Φ15	49	3	1171	274
125X100FSS2GC	30	125	100	125	360	150	60	200L	395.5	376.5	300	2-M50X1.5	229	300	92.5	1050	710	-	170	420	450	4-Φ15	59	4	1261	365
125X100FSS2HC	37	125	100	125	360	280	70	200L	395.5	376.5	300	2-M50X1.5	245	320	80	1060	720	-	170	424	460	4-Φ15	65	4	1261	399
125X100FSS2HC	45	125	100	125	360	280	70	225M	414.5	400.5	327	2-M50X1.5	307	320	80	1090	750	-	170	460	496	4-Φ15	53	4	1304	452
125X100FSS2JC	55	125	100	140	470	280	108	250M	483.5	433.5	373	2-M63X1.5	378	350	75	1290	950	-	170	486	524	4-Φ15	69	4	1531	583
125X100FSS2JC	75	125	100	140	470	280	108	280S	514	462	413	2-M63X1.5	550	392	135	1375	915	-	230	540	585	4-Φ19	84	4	1590	779
150X100FSS2KC	90	150	100	140	530	315	146	280M	539.5	487.5	413	2-M63X1.5	570	420	140	1490	1010	-	240	590	630	4-Φ24	124	4	1701	882
150X100FSS2KC	110	150	100	140	530	315	146	315S	559	554	482	2-M63X1.5	740	460	160	1590	1070	-	260	680	720	4-Φ24	159	4	1787	1097
150X100FSS2KC	132	150	100	140	530	315	146	315M	584.5	708.5	482	2-M63X1.5	855	460	160	1590	1070	-	260	680	720	4-Φ24	159	4	1967	1218

DIMENSION - PUMP WITH MOTOR (4P MOTOR)

Model	Output	Size		Pump				Motor					Common Base								Total					
	kW	SA	DA	A	B	D	Wt kg	Frame	MR	MA	Hm	Z-K	Wt kg	BC	BJ	BL	BM	BM1	BN	BY	BW	N-Fd	Wt kg	t	L	Wt kg
50X40FSS4HC	0.37	50	40	80	360	180	30	71M	120	120	137	M25X1.5+M16X1.5	12	240	55	630	390	-	120	260	290	4-Φ15	24	3	683	69
50X40FSS4HC	0.75	50	40	80	360	180	30	80M	140	148	142	M25X1.5+M16X1.5	17	240	55	650	410	-	120	280	310	4-Φ15	26	3	731	77
65X50FSS4HC	0.75	65	50	100	360	180	33	80M	140	148	142	M25X1.5+M16X1.5	17	240	55	650	410	-	120	280	310	4-Φ15	26	3	751	80
65X50FSS4JC	1.5	65	50	100	360	225	40	90L	168.5	172.5	152	M25X1.5+M16X1.5	24	260	42.5	710	470	-	120	320	350	4-Φ15	30	3	804	99
65X50FSS4JC	2.2	65	50	100	360	225	40	100L	193	197	177	2-M32X1.5	32	260	42.5	750	510	-	120	310	340	4-Φ15	31	3	853	108
80X65FSS4GC	0.75	80	65	100	360	180	32	80M	140	148	142	M25X1.5+M16X1.5	17	240	55	650	410	-	120	280	310	4-Φ15	26	3	751	79
80X65FSS4HC	1.5	80	65	100	360	200	37	90L	168.5	172.5	152	M25X1.5+M16X1.5	24	240	42.5	710	470	-	120	280	310	4-Φ15	28	3	804	93
80X65FSS4JC	2.2	80	65	100	360	225	60	100L	193	197	177	2-M32X1.5	32	260	42.5	750	510	-	120	310	340	4-Φ15	31	3	853	129
80X65FSS4JC	4.0	80	65	100	360	225	60	112M	200	193.5	189	2-M32X1.5	45	260	42.5	760	520	-	120	320	350	4-Φ15	32	3	857	144
80X65FSS4KC	7.5	80	65	125	470	280	108	132M	258	267	192	2-M32X1.5	73	325	65	970	650	-	160	390	420	4-Φ15	49	3	1123	242
80X65FSS4KC	11	80	65	125	470	280	108	160M	323	291	255	2-M40X1.5	103	325	75	1050	710	-	170	390	420	4-Φ15	51	3	1212	275
100X80FSS4GC	1.5	100	80	100	360	200	49	90L	168.5	172.5	152	M25X1.5+M16X1.5	24	240	42.5	710	470	-	120	280	310	4-Φ15	28	3	804	106
100X80FSS4GC	2.2	100	80	100	360	200	49	100L	193	197	177	2-M32X1.5	32	240	42.5	750	510	-	120	280	310	4-Φ15	29	3	853	116
100X80FSS4HC	2.2	100	80	100	360	225	62	100L	193	197	177	2-M32X1.5	32	260	42.5	750	510	-	120	310	340	4-Φ15	31	3	853	131
100X80FSS4HC	4.0	100	80	100	360	225	62	112M	200	193.5	189	2-M32X1.5	45	260	42.5	760	520	-	120	320	350	4-Φ15	32	3	857	146
100X80FSS4JC	4.0	100	80	100	360	250	70	112M	200	193.5	189	2-M32X1.5	45	280	25	770	530	-	120	350	380	4-Φ15	36	3	857	159
100X80FSS4JC	5.5	100	80	100	360	250	70	132S	239	241	192	2-M32X1.5	61	280	35	855	595	-	130	350	380	4-Φ15	40	3	943	180
125X100FSS4GC	2.2	125	100	125	360	250	60	100L	193	197	177	2-M32X1.5	32	260	42.5	750	510	-	120	310	340	4-Φ15	31	3	878	129
125X100FSS4GC	4.0	125	100	125	360	250	60	112M	200	193.5	189	2-M32X1.5	45	260	42.5	760	520	-	120	320	350	4-Φ15	32	3	882	144
125X100FSS4HC	4.0	125	100	125	360	280	70	112M	200	193.5	189	2-M32X1.5	45	303	48	770	490	-	140	422	454	4-Φ15	40	3	882	163
125X100FSS4HC	5.5	125	100	125	360	280	70	132S	239	241	192	2-M32X1.5	61	303	48	850	570	-	140	422	454	4-Φ15	41	3	968	181
125X100FSS4JC	5.5	125	100	140	470	280	108	132S	239	241	192	2-M32X1.5	61	325	65	970	650	-	160	390	420	4-Φ15	47	3	1093	227
125X100FSS4JC	7.5	125	100	140	470	280	108	132M	258	267	192	2-M32X1.5	73	325	65	970	650	-	160	390	420	4-Φ15	47	3	1138	239
125X100FSS4JC	11	125	100	140	470	280	108	160M	323	291	255	2-M40X1.5	103	325	65	1050	710	-	170	390	420	4-Φ15	50	3	1227	274
125X100FSS4KC	15	125	100	140	470	315	128	160L	345	329	255	2-M40X1.5	130	350	85	1090	730	-	180	390	420	4-Φ15	55	3	1287	329
125X100FSS4KC	18.5	125	100	140	470	315	128	180M	351.5	331.5	270	2-M40X1.5	165	350	95	1140	760	-	190	390	420	4-Φ15	57	3	1296	368
125X100FSS4LC	22	125	100	140	530	355	168	180L	370.5	347.5	270	2-M40X1.5	180	400	85	1220	820	-	200	480	520	4-Φ19	77	3	1391	446
125X100FSS4LC	30	125	100	140	530	355	168	200L	395.5	376.5	300	2-M50X1.5	238	400	95	1260	840	-	210	480	520	4-Φ19	83	4	1446	513
150X100FSS4NC	55	150	100	180	670	450	365	250M	483.5	433.5	373	2-M63X1.5	410	495	135	1545	1045	-	250	530	570	4-Φ19	120	4	1771	940
150X100FSS4NC	75	150	100	180	670	450	365	280S	514	462	413	2-M63X1.5	555	515	155	1650	1110	-	270	590	630	4-Φ24	142	4	1830	1115
150X100FSS4NC	90	150	100	180	670	450	365	280M	539.5	487.5	413	2-M63X1.5	610	515	155	1650	1110	-	270	590	630	4-Φ24	142	4	1881	1173
150X125FSS4HC	7.5	150	125	140	470	315	120	132M	258	267	192	2-M32X1.5	73	350	65	970	650	-	160	390	420	4-Φ15	50	3	1138	255
150X125FSS4HC	11	150	125	140	470	315	120	160M	323	291	255	2-M40X1.5	103	350	85	1090	730	-	180	390	420	4-Φ15	55	3	1227	292
150X125FSS4HC	15	150	125	140	470	315	120	160L	345	329	255	2-M40X1.5	130	350	85	1090	730	-	180	390	420	4-Φ15	55	3	1287	320
150X125FSS4JC	15	150	125	140	470	355	128	160L	345	329	255	2-M40X1.5	130	350	85	1090	730	-	180	390	420	4-Φ15	55	3	1287	329
150X125FSS4JC	18.5	150	125	140	470	355	128	180M	351.5	331.5	270	2-M40X1.5	165	350	95	1140	760	-	190	390	420	4-Φ15	57	3	1296	368
150X125FSS4JC	22	150	125	140	470	355	128	180L	370.5	347.5	270	2-M40X1.5	180	350	95	1140	760	-	190	390	420	4-Φ15	57	3	1331	383
150X125FSS4KC	30	150	125	140	530	355	170	200L	395.5	376.5	300	2-M50X1.5	238	400	95	1260	840	-	210	480	520	4-Φ19	83	4	1446	516
150X125FSS4KC	37	150	125	140	530	355	170	225S	432	388	327	2-M50X1.5	298	400	100	1330	890	-	220	480	520	4-Φ19	83	4	1494	579
150X125FSS4LC	45	150	125	140	530	400	205	225M	444.5	400.5	327	2-M50X1.5	322	435	105	1330	890	-	220	480	520	4-Φ19	88	4	1519	646
150X125FSS4LC	55	150	125	140	530	400	205	250M	483.5	433.5	373	2-M63X1.5	410	435	120	1410	930	-	240	510	550	4-Φ19	100	4	1591	751
150X125FSS4LC	75	150	125	140	530	400	205	280S	514	462	413	2-M63X1.5	555	435	125	1460	980	-	240	590	630	4-Φ19	147	4	1650	952
200X150FSS4HC	5.5	200	150	160	470	355	137	132S	239	241	192	2-M32X1.5	61	380	45	990	670	-	160	490	520	4-Φ15	60	3	1113	271
200X150FSS4HC	7.5	200	150	160	470	355	137	132M	258	267	192	2-M32X1.5	73	380	45	990	670	-	160	490	520	4-Φ15	60	3	1158	284
200X150FSS4HC	11	200	150	160	470	355	137	160M	323	291	255	2-M40X1.5	103	400	55	1070	730	-	170	480	520	4-Φ19	71	3	1247	327
200X150FSS4JC	15	200	150	160	530	375	183	160L	345	329	255	2-M40X1.5	130	400	75	1170	790	-	190	480	520	4-Φ19	74	3	1367	406
200X150FSS4JC	18.5	200	150	160	530	375	183	180M	351.5	331.5	270	2-M40X1.5	165	400	85	1220	820	-	200	480	520	4-Φ19	77	3	1376	446
200X150FSS4JC	22	200	150	160	530	375	183	180L	370.5	347.5	270	2-M40X1.5	180	400	85	1220	820	-	200	480	520	4-Φ19	77	3	1411	462
200X150FSS4JC	30	200	150	160	530	375	183	200L	395.5	376.5	300	2-M50X1.5	238	400	95	1260	840	-	210	480	520	4-Φ19	83	4	1466	529

DIMENSION - PUMP WITH MOTOR (4P MOTOR)

Model	Output	Size		Pump				Motor					Common Base								Total					
	kW	SA	DA	A	B	D	Wt kg	Frame	MR	MA	Hm	Z-K	Wt kg	BC	BJ	BL	BM	BM1	BN	BY	BW	N-Fd	Wt kg	t	L	Wt kg
200X150FSS4KC	37	200	150	160	670	400	222	225S	432	388	327	2-M50X1.5	298	435	125	1470	990	-	240	530	570	4-Φ19	94	4	1654	645
200X150FSS4KC	45	200	150	160	670	400	222	225M	444.5	400.5	327	2-M50X1.5	322	435	125	1470	990	-	240	530	570	4-Φ19	94	4	1679	670
200X150FSS4KC	55	200	150	160	670	400	222	250M	483.5	433.5	373	2-M63X1.5	410	435	130	1550	1050	-	250	530	570	4-Φ19	103	4	1751	772
200X150FSS4LC	75	200	150	164	670	450	336	280S	514	462	413	2-M63X1.5	555	465	155	1650	1110	-	270	590	630	4-Φ24	183	4	1814	1128
200X150FSS4LC	90	200	150	164	670	450	336	280M	539.5	487.5	413	2-M63X1.5	610	465	155	1650	1110	-	270	590	630	4-Φ24	183	4	1865	1185
200X150FSS4NC	110	200	150	184	670	560	488	315S	589	554	482	2-M63X1.5	750	515	185	1820	1220	-	300	680	720	4-Φ24	183	4	2001	1492
200X150FSS4NC	132	200	150	184	670	560	488	315M	614.5	708.5	482	2-M63X1.5	875	515	185	1820	1220	-	300	680	720	4-Φ24	183	4	2181	1623
200X150FSS4NC	160	200	150	184	670	560	488	315L	640	683	482	2-M63X1.5	960	515	185	1820	1220	-	300	680	720	4-Φ24	183	4	2181	1713
250X200FSS4LC	90	250	200	180	670	560	505	280M	539.5	487.5	413	2-M63X1.5	610	525	105	1710	1150	-	280	650	690	4-Φ24	154	4	1881	1332
250X200FSS4LC	110	250	200	180	670	560	505	315S	589	554	482	2-M63X1.5	750	525	125	1880	1280	-	300	680	720	4-Φ24	191	4	1997	1518
250X200FSS4LC	132	250	200	180	670	560	505	315M	614.5	708.5	482	2-M63X1.5	875	525	125	1880	1280	-	300	680	720	4-Φ24	191	4	2177	1650
250X200FSS4LC	160	250	200	180	670	560	505	315L	640	683	482	2-M63X1.5	960	525	125	1880	1280	-	300	680	720	4-Φ24	191	4	2177	1739
250X200FSS4NC	200	250	200	200	820	630	642	315L	640	683	482	2-M63X1.5	1080	585	155	2030	1370	685	330	680	720	6-Φ24	212	4	2347	2031
250X200FSS4NC	250	250	200	200	820	630	642	355M	704	816	655	2-M72X1.5	1680	625	185	2120	1400	700	360	780	830	6-Φ28	275	4	2544	2727
250X200FSS4NC	315	250	200	200	820	630	642	355L	739	781	655	2-M72X1.5	1900	625	185	2120	1400	700	360	780	830	6-Φ28	275	4	2544	2958



* Dimensional details are provided for reference only.
 * All specifications are subject to change without prior notice.



EBARA Pumps Malaysia Sdn Bhd
 6, Jalan TP3, UEP Subang Jaya Industrial Park,
 47620 Subang Jaya, Selangor, Malaysia.
 Tel : 03-8023 6622 Fax : 03-8023 9355
 Email : sales.epm@ebara.com
 Website : www.ebara.com.my



Authorised dealer: